

HARDWARE COLLECTION #4 (PAGE 1)

PLEASE NOTE: Pages 1 & 2 ARE FOR FINISH REFERENCE ONLY

Please scroll down to pages 3 thru 8 of this chart to see the **STYLES** available in this Collection (Each **STYLE NAME** is highlighted in **ALL CAPS BLUE ITALICIZED LETTERING**)

(Remember, you have 9 total collections of beautiful hardware to choose from, all at no add'l cost)

Below each **STYLE NAME** are the available finishes for each particular style of hardware. After selecting a style, please refer back to pages 1 and 2 of this chart to view the **AVAILABLE FINISHES** listed as being available for that particular style.

When placing order or questions about a particular style, kindly provide the **STYLE NAME, **INDIVIDUAL PIECE #** (located directly below photo of each individual piece)**

FINISH ABBREVIATION, FINISH NAME, COLLECTION # and PAGE #, Thank you!



26, CH
POLISHED CHROME



PN
POLISHED NICKEL



SN
SATIN NICKEL
(MATTE)



26D, SCH
BRUSHED
CHROME



G9
STERLING
NICKEL



G10
SATIN NICKEL



PN
POLISHED
NICKEL



AA
ANODIZED
ALUMINUM



SS
STAINLESS STEEL



AN
ANTIQUE NICKEL



AS
ANTIQUE SILVER



AP
AGED PEWTER



GM
GUNMETAL



WN
WEATHERED NICKEL



WNC
WEATHERED NICKEL
COPPER



3, PB
POLISHED BRASS



B
POLISHED SOLID
BRASS



LB
LIGHT ANTIQUE
BRASS



AB, ABS
ANTIQUE BRASS



GB
GILDED BRONZE



O74
BRUSHED BRASS



BBZ
BRUSHED BRONZE OR
GOLDEN CHAMPAGNE



EB
ELEGANT BRASS



DBS
DISTRESSED BRASS



AE
ANTIQUE BRASS OR
ANTIQUE ENGLISH



O77, BB
BURNISHED BRASS



R1
REGENCY BRASS



R2
WEATHERED BRASS



R3
RUSTIC BRASS



VS
VIRIDIAN SLATE



WC
WEATHERED
COPPER



RBZ
RUSTIC BRONZE



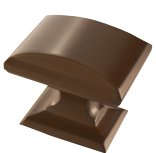
ART
ANTIQUE RUST



WI
WROUGHT IRON



WID
WROUGHT IRON
DARK



CBZ
CARMEL BRONZE



VB
VENETIAN BRONZE



BC
BRUSHED COPPER



RB
ROMAN BRONZE



ORB
OIL-RUBBED
BRONZE



DOB
DARK OILED
BRONZE



SBK
SILVERED BLACK



MB
MATTE BLACK



BNB
BLACK NICKEL
(SOLID BRASS)



BBR
BLACK BRONZE



FB
FLAT BLACK



GPH
GRAPHITE



PWT
PEWTER

HARDWARE COLLECTION #4 (PAGE 2)

PLEASE NOTE: Pages 1 & 2 ARE FOR FINISH REFERENCE ONLY

Please scroll down to pages 3 thru 8 of this chart to see the **STYLES** available in this Collection (Each **STYLE NAME** is highlighted in **ALL CAPS BLUE ITALICIZED LETTERING**)
(Remember, you have 9 total collections of beautiful hardware to choose from, all at no add'l cost)

Below each **STYLE NAME** are the available finishes for each particular style of hardware. After selecting a style, please refer back to pages 1 and 2 of this chart to view the **AVAILABLE FINISHES** listed as being available for that particular style.

When placing order or questions about a particular style, kindly provide the **STYLE NAME, **INDIVIDUAL PIECE #** (located directly below photo of each individual piece)**

FINISH ABBREVIATION, FINISH NAME, COLLECTION # and PAGE #, Thank you!



G10FA
SATIN NICKEL /
FROSTED



GM
GUNMETAL



GMFA
GUNMETAL /
FROSTED



PNFA
POLISHED NICKEL /
FROSTED



G10ORB
SATIN NICKEL / OIL-
RUBBED BRONZE



PNGM
POLISHED NICKEL /
GUNMETAL



PNSS
POLISHED NICKEL /
STAINLESS STEEL



BK, BLK, NBZ, BJ
BLACK



BN
BLACK NICKEL



PBK
BLACK (PLASTIC)



CB
COLONIAL BLACK



30, W, 54, GW
WHITE



PW
WHITE (PLASTIC)



DEL
WHITE WITH
PATTERN



WHT
WHITE OR WHITE
WITH PATTERN



CG
WHITE/GRAY



A, AL
ALMOND



BON
BONE ALMOND



DW
DISTRESSED
CREAM



HGR
HUNTER GREEN



WCH, 26W, W26
WHITE / POLISHED
CHROME



30G, WG10
WHITE / SATIN
NICKEL



30B, WPB, W3
WHITE / POLISHED
BRASS



WB
WHITE / BURNISHED
BRASS



FWP
ALMOND / POLISHED
BRASS



OB
OAK / ANTIQUE
BRASS



O3, OPB, PBOK
OAK / POLISHED
BRASS



BC, 263
POLISHED
CHROME / BRASS



WOOD
UNFINISHED WOOD



WD
UNFINISHED WOOD,
BIRCH



CS
CLEAR



CSG, CG10
CLEAR / SATIN
NICKEL



CGB
CLEAR / GILDED
BRONZE



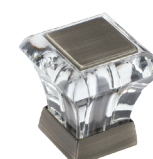
CORB
CLEAR / OIL RUBBED
BRONZE



CBBR
CLEAR /
BLACK BRONZE



CBB
CLEAR / BURNISHED
BRASS



CAS
CLEAR / ANTIQUE
SILVER



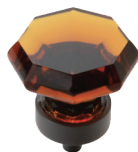
CBBZ
CLEAR / GOLDEN
CHAMPAGNE



CCBZ
CLEAR / CARAMEL
BRONZE



CPN
CLEAR / POLISHED
NICKEL



ABBR
AMBER /
BLACK BRONZE



AORB
AMBER / OIL
RUBBED BRONZE



14
NICKEL



AC
ANTIQUÉ COPPER

OBERON

AVAILABLE FINISHES



PN G10 GM



PNFA G10FA GMFA

36603 is not available in PNFA, G10FA or GMFA Finishes.
36608 is not available in PN, G10 or GM Finishes.



36603-PN
1 3/8" DIA
1 3/16" PROJ



36608-PNFA
1 3/8" DIA
1 3/16" PROJ

GRACE REVITALIZE

AVAILABLE FINISHES



G10 BBZ ORB



36628-BBZ
1 3/8" DIA
1 3/16" PROJ



36629-BBZ
1 3/4" DIA
1 3/8" PROJ

KONTUR

AVAILABLE FINISHES



G10



36564-G10
3" C/C
4" L



36565-G10
96MM C/C
4 3/4" L



36566-G10
128MM C/C
6" L



36567-G10
160MM C/C
7 5/16" L

CAROLYNE

AVAILABLE FINISHES



PN G10 ORB



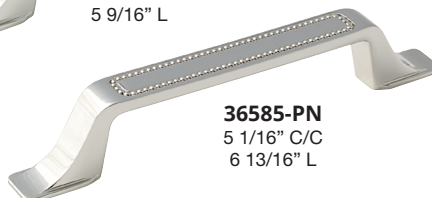
36580-PN
1 3/8" DIA
1 1/16" PROJ



36582-PN
1 1/4" L
1 1/16" PROJ



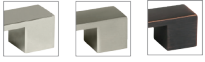
36584-PN
3 3/4" C/C
5 9/16" L



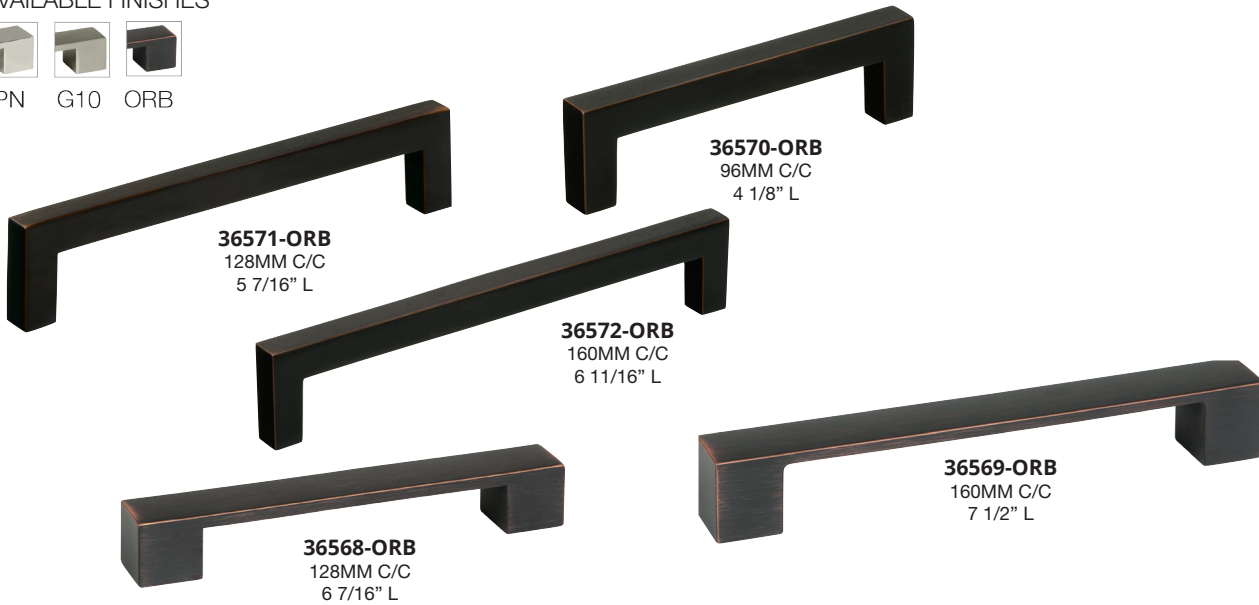
36585-PN
5 1/16" C/C
6 13/16" L

MONUMENT

AVAILABLE FINISHES

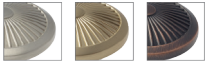


PN G10 ORB

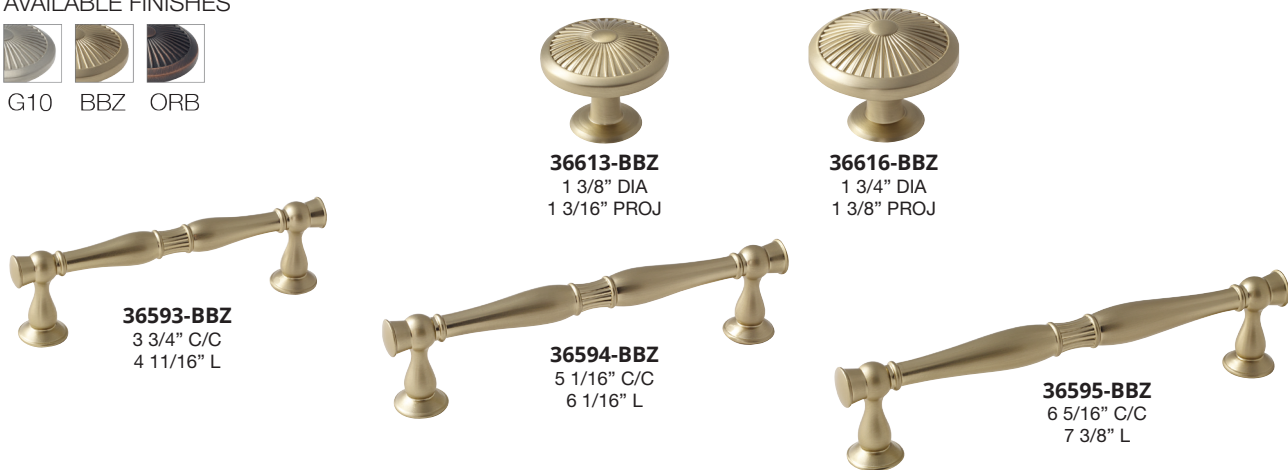


CRAWFORD

AVAILABLE FINISHES



G10 BBZ ORB



DAVENPORT

AVAILABLE FINISHES

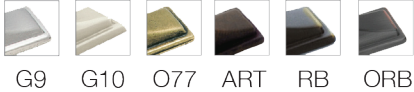


G10 GM ORB



BRASS AND STERLING TRADITIONS

AVAILABLE FINISHES



G9 G10 O77 ART RB ORB



1307-ORB
1 1/4" DIA
15/16" PROJ



1300-ORB
3" C/C
5 1/4" L



1302-ORB
3" C/C
5" L



1312-ORB
96MM C/C
5 2/3" L



1313-ORB
128MM C/C
7" L



1314-ORB
160MM C/C
8 1/4" L

1300 is not available in G10 Finish.
1302 is not available in RB Finish.
1307 is not available in G10 or RB Finishes.
1313 is only available in G10 and ORB Finishes.
1312, 1314 and 1315 are not available in G9, O77 or ART Finishes.
54004 is not available in ART Finish.

ABSTRACTIONS

AVAILABLE FINISHES



26 26D G10



19257-G10
1 1/4" DIA
1 3/8" PROJ

19257 is not available in 26D Finish.



19258-G10
3" C/C
4 5/8" L

RADIANCE

AVAILABLE FINISHES



3



1396-3
1 1/2" L
1 1/32" PROJ



1394-3
3" C/C
4 1/4" L

OPULENCE

AVAILABLE FINISHES



26 G10 EB ORB



26133-EB
1 3/8" DIA
15/16" PROJ



26132-EB
3" C/C
3 5/8" L

ALLISON

AVAILABLE FINISHES



G10 WN ORB GPH BC VB



55220-ORB
2 5/8" L
1 1/3" PROJ



55221-2-ORB
3" L
1 9/16" PROJ



55222-ORB
3" C/C
3 3/5" L



55224-ORB
128MM C/C
5 7/9" L



55223-ORB
96MM C/C
4 1/2" L



55225-BC
160MM C/C
7" L

55220, 55221-2, 55223 and 55224 are not available in GPH Finishes.

ALLISON

AVAILABLE FINISHES



26 G10 EB BB RB ORB BN FB



55243-ORB
96MM C/C
4 1/5" L



53013-ORB
3" C/C
3 3/8" L



55244-ORB
128MM C/C
5 1/2" L



55245-ORB
160MM C/C
6 7/8" L

55243, 55244, 55245, 55246 and 55247 are only available in G10 and ORB finishes.

ALLISON VALUE HARDWARE

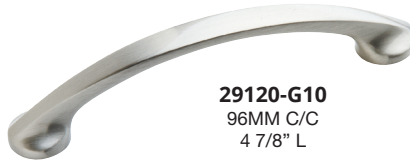
AVAILABLE FINISHES



26 G10 3 BB ORB FB 263



52989-G10
96MM C/C
5" L



29120-G10
96MM C/C
4 7/8" L



52991-G10
96MM C/C
4 3/4" L



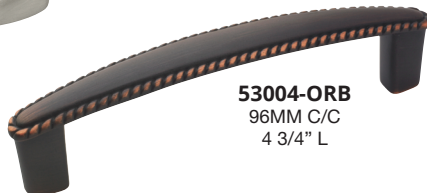
52992-G10
96MM C/C
4 5/8" L



52995-G10
96MM C/C
5" L



53001-ORB
1 1/4" DIA
7/8" PROJ



53004-ORB
96MM C/C
4 3/4" L



1964-263
3" C/C
3 15/16" L

53001 and 53004 are not available in 263 Finish.
All other items are only available as shown.

ALLISON VALUE HARDWARE

AVAILABLE FINISHES



26 G10 3 BB ORB FB WN



3414-26
1 3/4" DIA
3/4" PROJ



3413-26
1 1/2" DIA
5/8" PROJ



551-26
1 1/16" DIA
7/8" PROJ



29116-G10
1 3/16" DIA
3/4" PROJ



53002-G10
1 3/16" DIA
1" PROJ



69151-G10
1 1/2" DIA
3/4" PROJ



69152-3
1 1/2" DIA
3/4" PROJ

551, 53017, 69151 and 69152 are only available as shown.
3413 and 3414 are only available in 26 and 3 Finishes.
29116 is only available in G10, WN and ORB Finishes.
53002 is not available in WN Finish.

ALLISON VALUE HARDWARE

AVAILABLE FINISHES



26 G10 3 EB ORB BN FB



53011-G10
1 1/4" DIA
1 1/8" PROJ



53018-G10
1 3/8" L
1 1/2" PROJ

53018 is not available in BN Finish.

ALLISON VALUE HARDWARE

AVAILABLE FINISHES



26 26D G10 B AE BNB ORB NBZ



1950-26D
1 1/4" DIA
1" PROJ



1950H-BNB
1 1/4" DIA
1" PROJ

1950 is solid brass and 1950H is hollow brass
1950H IS NOT AVAILABLE IN ORB or NBZ finishes

ALLISON VALUE HARDWARE

AVAILABLE FINISHES



DW PBK 30/54/PW



1321-DW
1 3/8" DIA
1 1/16" PROJ



725-30
1 5/16" DIA
1 3/16" PROJ



5432-54
96MM C/C
4 3/8" L



5373-54
3" C/C
3 1/2" L



803-PW
3" C/C
3 5/16" L

803 is only available in PW and PBK Finishes.
All other items are only available as shown.

ALLISON VALUE HARDWARE

AVAILABLE FINISHES



26 3 G10 26D/SCH



76313-26D
96MM C/C
4 1/8" L



76312-26D
4" C/C
4 1/4" L



865-26D
3" C/C
3 5/16" L



1970-26D
96MM C/C
4 1/2" L



867-26D
3 1/2" C/C
3 13/16" L

865 is not available in SCH Finish. 865 is not available in 3 Finish.
867 and 1970 are only available in 26D and G10 Finishes.
943, 977 and 979 are only available as shown.
76312 is not available in SCH or 3 Finishes.
76313 is not available in SCH Finish.



977-26D
3" C/C
3 1/4" L



979-26D
4" C/C
4 1/4" L



943-SCH
4" C/C
4 5/16" L

ALLISON VALUE HARDWARE

AVAILABLE FINISHES



G10 WN 3 BB R3 WI FB AS EB ORB BN RB 26



53019-3
2 1/2" C/C
3 1/8" L



53010-G10
3" C/C
3 3/8" L

53010 is not available in WN, 3, R3 or WI Finishes.
53019 is not available in 26, AS, EB, RB, ORB or BN Finishes.